

# ALDRIDGE

## e-LED Area Lighting System

150w - 2450w

DATA SHEET





**Aldridge e-LED** is a brand new elite performance, multi application LED luminaire designed to illuminate sports fields, airports and large outdoor areas with supreme uniformity, outstanding light quality and remarkable visual comfort.

**Aldridge** Utilizing our patented fold fin thermal technology and latest high flux LEDs, **e-LED** emits more than 280,000 lumens from a single compact lightweight luminaire. The custom engineered optics are a breakthrough in LED beam control, enabling **e-LED** to deliver incredible photometric outputs that meet and exceed the most challenging of schemes.

### Benefits

- Multiple lumen packages to replace traditional lamps
- Low wind profile area (EPA)
- Easy direct replacement using the existing mast wiring and mounting arms
- Dark sky friendly with zero upward light
- Field adjustable
- Industry leading optical performance for light spill control
- Consistent high performance in the most demanding environments
- Compatible with leading programmable lighting control systems

### Applications

- |                 |                     |
|-----------------|---------------------|
| ▪ Sports fields | ▪ Logistics         |
| ▪ Stadiums      | ▪ Car parks         |
| ▪ Shipyards     | ▪ High mast         |
| ▪ Airports      | ▪ Traffic junctions |

### Fold Fins

Patented lightweight thermal structure maximizes heat dissipation whilst maintaining a compact, lightweight, luminaire design.

### Mounting System

Versatile mounting bracket, designed for simple install in new or retro fit applications.

### Adjusting

Simple to adjust for final aiming.

### Finish

Polyester powder paint provides a highly durable finish that is resistant to UV rays and corrosion.

### Hood

Eliminates upward light leakage and provide excellent control of spill light.

### Optics

Eight custom-engineered optics that direct light precisely where needed whilst minimizing glare.

### IP66 Enclosure

Weather-tight design ensures durability and reliability in the harshest environments.

### LEDs

Long life, high density L80 >100,000 hours  
Ta 45°C.

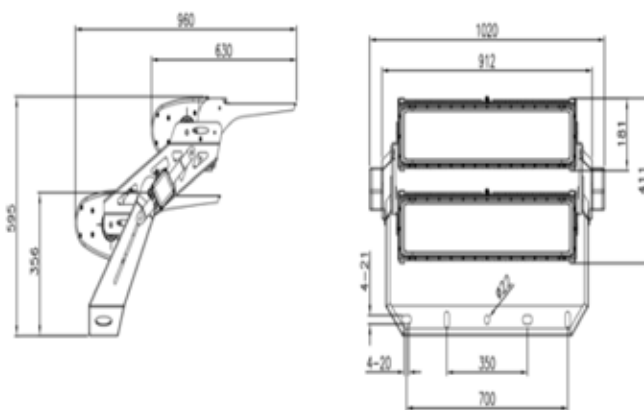
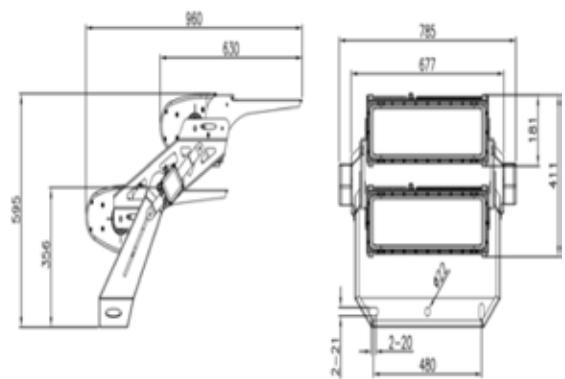
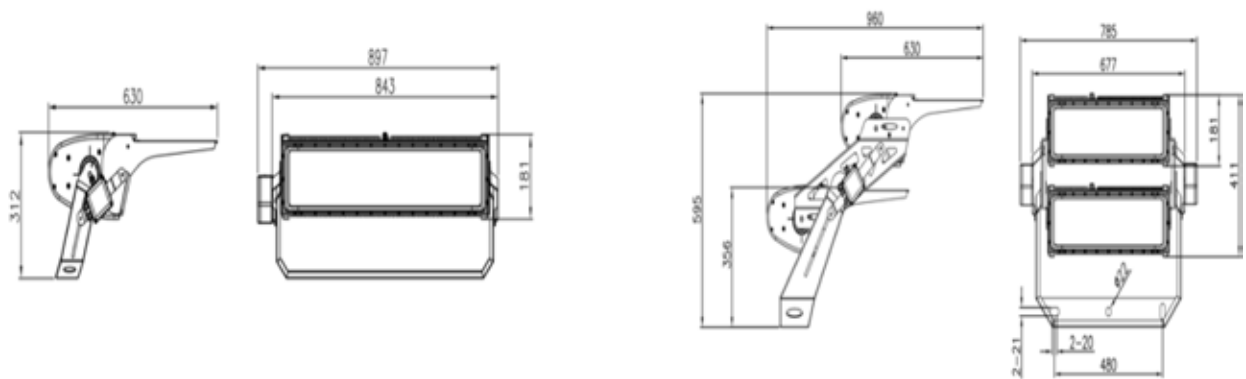
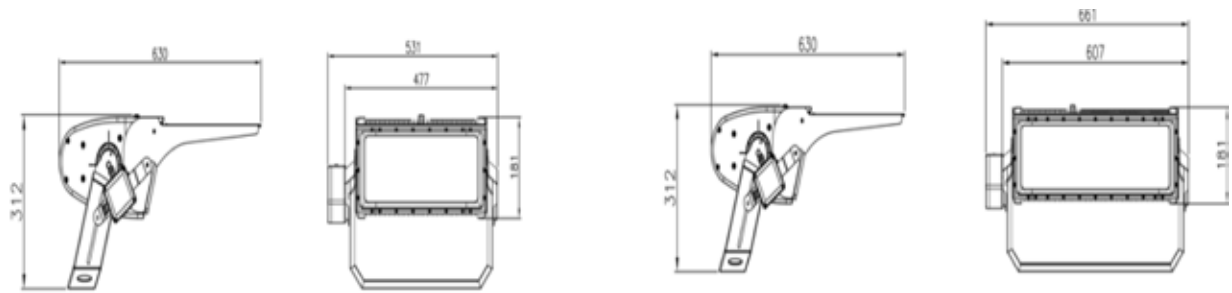
### Glass

Heat, shock and vandal resistant, toughened glass lens, with high light transmission.

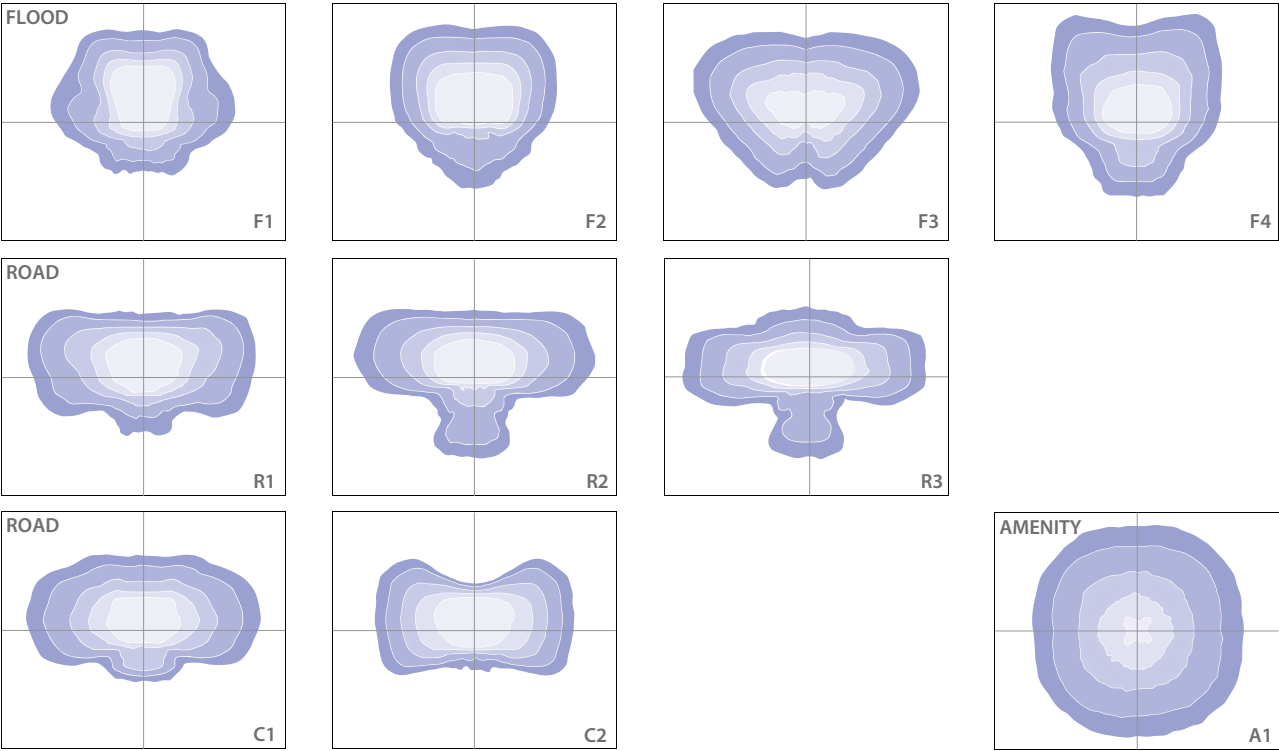
## Technical Specification

Description	High Mast LED Series (e-LED)								
Recommended Product Location	High Mast Lighting								
Model Number	ELED-150	ELED-300	ELED-450	ELED-650	ELED-950	ELED-1250	ELED-1550	LED-1850	ELED-2450
Typical System Power (W)	150W	300W	450W	650W	950W	1250W	1550W	1850W	2450W
Luminous Flux (lm)	17,100	34,200	51,500	74,500	109,000	143,500	212,500	281,500	281,500
Weight (kg)	10.5	10.5	10.5	11	13	23	34	44	44
Power Gear Weight (kg)	3	3	3	5.6	9	11.2	18	22.4	22.4
Correlated Colour Temperature	4000K, 5000K, 6500K								
Colour Rendering Index	>70CRI (80 & 90 CRI also available)								
Input Voltage Range	>120-277V / 347-480V AC								
Power Factor	0.99 @ 120Vac 0.96 @ 220Vac								
Electrical Class	Class I								
Input Surge Protection	6kV line-line, 10kV line-earth								
Dimming Control options	0-10V, DALI								
Standby Power	≤0.5W								
Driver Tc	75°								
Protection	Over voltage, short circuit, thermal sensing for LED module								
Ambient Operating Temperature	-40°C to + 45°C								
Ambient Storage Temperature	-40°C to + 85°C								
Material	Aluminium (body) (LM6 optional), Zinc galvanized steel (bracket)								
Optical Cover	Toughened glass								
Finish	Polyester powder coating (coastal finish option - check availability)								
Colour	Standard colour: Grey / Black (RAL & custom colours available)								
Photocell	Aluminium (body), Zinc galvanized steel (bracket)								
Ingress Protection (IP)	IP65								
Quality Assurance System	ISO9001								
Batch Coded	Yes								
Certification	CE, CB, DLC, SAA, ETL (Pending)								

## Dimensions



# Photometrics



# Ordering Information

Product ID	LED Power	Color Temp	CRI	Optics	Color	Control
ELED	015 = 150W	40K = 4000K 50K = 5000K 65K = 6500K	70 = Min 70 80 = Min 80 90 = Min 90	FT = Far Throw	GR = Grey BL = Black	WC = Wireless Control
	030 = 300W			ML = Medium Left		
	045 = 450W			MR = Medium Right		
	065 = 650W			SR = Short Left		
	095 = 950W			SR = Short Right		
	125 = 1250W			R1 = Round 15" x 15"		
	155 = 1550W			R3 = Round 30" x 30"		
	185 = 1850W			R6 = Round 60" x 60"		
	245 = 2450W					

Note: Actual performance may differ as a result of end-user environment and application.  
All values are typical values, measured under laboratory conditions at 25°C. Specifications subject to change without notice.



## Aldridge Traffic Systems Pty Ltd

12 - 14 Leeds Street  
Rhodes NSW 2138

[www.aldridgetraffic.com.au](http://www.aldridgetraffic.com.au)

### NSW

P: +61 2 9736 3677  
F: +61 2 9736 3391  
e: [info@trafficltd.com.au](mailto:info@trafficltd.com.au)

### VIC

P: +61 3 9430 0222  
F: +61 3 9430 0244  
e: [info@trafficltd.com.au](mailto:info@trafficltd.com.au)

### SA

P: +61 8 8362 2385  
  
e: [info@trafficltd.com.au](mailto:info@trafficltd.com.au)

### NT

P: +61 8 8947 0733  
F: +61 8 8947 0713  
e: [info@trafficltd.com.au](mailto:info@trafficltd.com.au)

### ACT

P: +61 2 6299 7922  
F: +61 2 6299 7977  
e: [info@trafficltd.com.au](mailto:info@trafficltd.com.au)

### WA

P: +61 8 9248 1002  
F: +61 8 9209 2288  
e: [info@trafficltd.com.au](mailto:info@trafficltd.com.au)

### QLD

P: +61 7 3266 1900  
F: +61 7 3266 2244  
e: [info@trafficltd.com.au](mailto:info@trafficltd.com.au)

### TAS

P: +61 3 6273 1177  
F: +61 3 6273 1759  
e: [info@trafficltd.com.au](mailto:info@trafficltd.com.au)

### UNITED KINGDOM

P: +44 (0) 1159 223 797  
F: +44 (0) 1159 223 836  
e: [info@aldridgetraffic.co.uk](mailto:info@aldridgetraffic.co.uk)