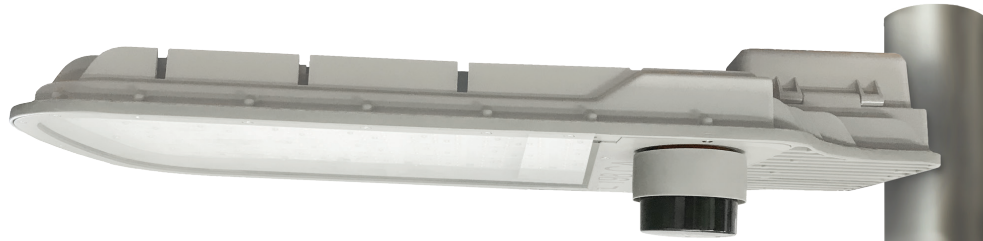
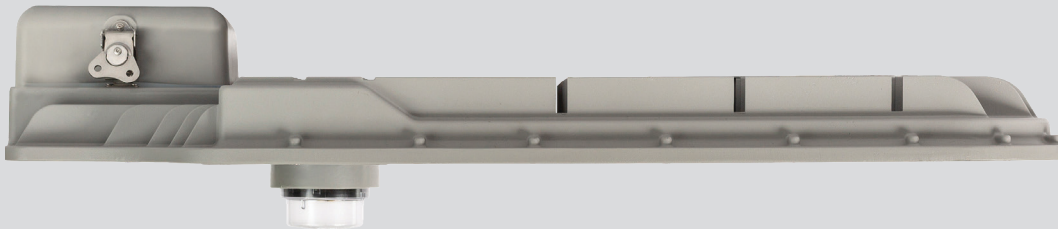


ALDRIDGE



V-LED MKII - 105W

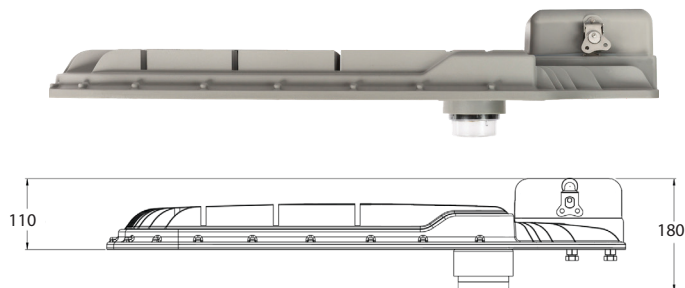
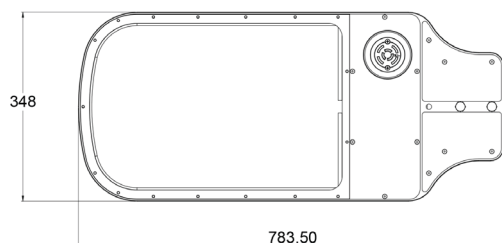


LED Lighting for Major Roads and Tunnels



Z H A G A
Associate Member

Dimensions



Features

- Smart City Ready - TST compatibility Zigbee, LoRa, NBIoT
- High Performance roadway luminaire designed to meet stringent Australian/New Zealand road lighting standard, AS/NZS 60698.2.3 & AS/NZS TS 1158.6
- High Performance Optics designed to comply and meet Australian standards AS1158-1.1 Cat V
- Direct replacement of conventional V - Category High Pressure Sodium and Metal Halide luminaires
- Semi-cutoff and Aero screen (std) diffuser
- Integrated thermal management
- Segregated termination chamber c/w quick access
- 20 year Design Life
- 10 year warranty

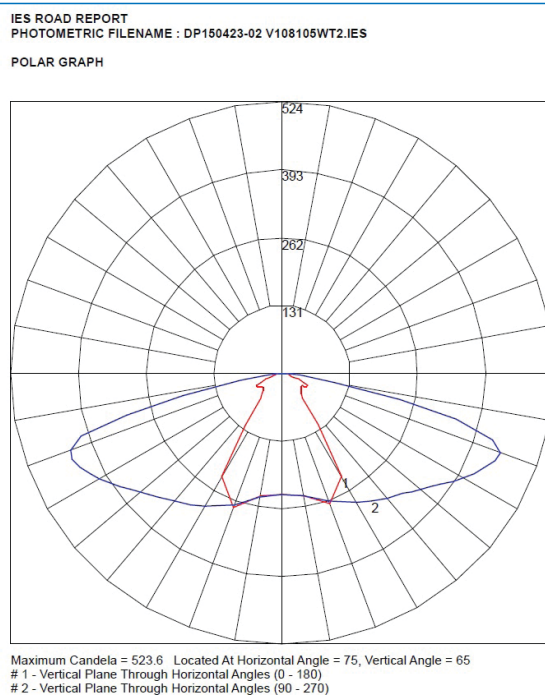
Technical Data

- **Body:** High Pressure Marine Grade Die Cast Aluminum
- **Optics:** Type 2 - 3
- **LED:** CREE
- **Wattage:** 105 Watts
- **Finishing:** Powder Coat (Grey Standard)
- **Mounting:** 9 - 15 Metres
- **Fixing:** Side Spigot Mount (43 - 49mm OD)
- **IP rating:** IP65
- **IK rating:** IK06
- **Voltage:** 220V - 240V 50/60Hz
- **Power Factor:** >0.9

Options

- **Photocell:** 7-pin Nema receptacle (7PN)
- **Fuse Terminal Block:** (FTB)
- **Surge Protection Device:** (SPD - 10KVA, 20KVA)
- **Class II:** (DB - Double Insulated)
- **Colour:** Black (BL), White (WH) Grey (GR - Standard)
- **CCT:** 3000K, 4000K (Standard), 5000K
- **Visor:** Glare shield/spill light kit (GV)
- **Remote Gear:** (GV)
- **5° Tilt Adjustment Adapter:** (5TA)

Photometric Design Data



Specification V-LED MKII - 298W

| PRODUCT CODE | V105WT2N7PBP |
|-------------------------------------|---------------------|
| Power Watts | 100 |
| System Watts | 105 |
| Input Voltage (V) | 220V - 240V 50/60Hz |
| CCT (K) | 4000 |
| CRI | Ra>80 |
| IP Protection | IP65 |
| IK Protection | IK06 |
| Weight (Kg) Remote Gear: Less 1.8Kg | <14kg |