



i:TS Intelligent Traffic Systems

Product Catalogue

WHO WE ARE

i:TS is a division of Artcraft Pty Ltd, an Australian owned and operated company and is at the forefront of the Intelligent Transportation Systems industry.

In today's traffic environment, static road signs are no longer enough to provide motorists with all the information they require in a relevant and timely manner. This is where i:TS's road management solutions can, in consultation with all stakeholders, tailor a solution for you.

At i:TS we pride ourselves on delivering road management solutions and intelligent traffic systems that provide relevant and timely information or messages to motorists to inform them of the traffic environment ahead of them so that they can make informed decisions ahead of time. Better informed motorists help create safer and smoother traffic flows on our road network.

WHAT WE OFFER

DESIGN & BUILD

i:TS can help you find the best and most cost effective solution to your traffic management issues. We have extensive experience, technology and resources at our disposal that will enable us to design, build and even install the right solution for you.

PROJECT MANAGEMENT

Our experienced in-house Project Management team can take full control of your traffic management solution projects to ensure that projects are completed on time and within budget, from manufacture to installation, for optimum product functionality.

SERVICE & MAINTENANCE

Regular and competent service and maintenance of traffic management products is a cornerstone of increased product life, functionality and return on investment. As designers, manufacturers and installers of traffic management solutions, i:TS is best placed to deliver high value service and maintenance works for those products.

ENHANCED SAFETY PRODUCTS

- Enhanced Road Signs
- Fixed Static & Full Matrix LED Variable Message Signs
- Flashing Arrow Signs
- Lane Use Management Signs
- LED Enhanced School Zone Signs
- Driver Feedback Signs
- Portable Variable Message Signs
- Road Condition & Management Solution Signs
- Portable Speed/Automatic License Plate Number Recognition (ALPNR) Camera System
- Speed Indication Device Signs
- Variable Speed Limit Signs
- Vehicle Activated Speed & Warning Signs
- Vehicle Over-Height Detection
- Portable Light Towers
- PORTABOOM® Temporary Barrier



Table of Contents

TEMPORARY TRAFFIC MANAGEMENT

Mobile Variable Message Signs (VMS)

- PCMS-4880RC (Small VMS) 6
- PCMS-548VT (Medium VMS) 6
- PCMS-320RC (Large VMS) 7
- PCMS-320RTRC (Large Colour VMS) 7

Light Towers

- PTL-1000 10
- PPL-1000 10
- PSLT-4000S 11
- PSLT-6000 11

Flashing Arrow Boards

- B Size Arrow Board 14-15

Temporary Barrier

- Portaboom® 16-17

Work Zone Management Camera

- WZMC-1000 18-19

Speed Indication Device Trailers

- EVOLIS 20-21
- SP-3248V Speedcam 22-23

VEHICLE ACTIVATED SIGNS

- VAS General 24-25
- EVOLIS 26-27

NIGHTBRITE LED EDGE-LIT SIGNS

28-29

Table of Contents

SECURITY AND SURVEILLANCE

- PSD-4000 30-31

ENHANCED STATIC SIGNS

- Overview 32-33

FIXED VMS

- TC2204_1 / TC2206_3 Flood Zone Signs 34
- Evocity Public Information Display 34
- Variable Speed Limit Signs 36

VEHICLE DETECTION / SENSOR TECHNOLOGY

- Over Height Solution 37
- Intelligent Sensors 38
- Rain Sensors 39

Mobile Variable Message Signs

PCMS-4880RC



**SUITABLE FOR APPROACHING
VEHICLE SPEEDS UP TO 50 KM/H**

PCMS-548VT



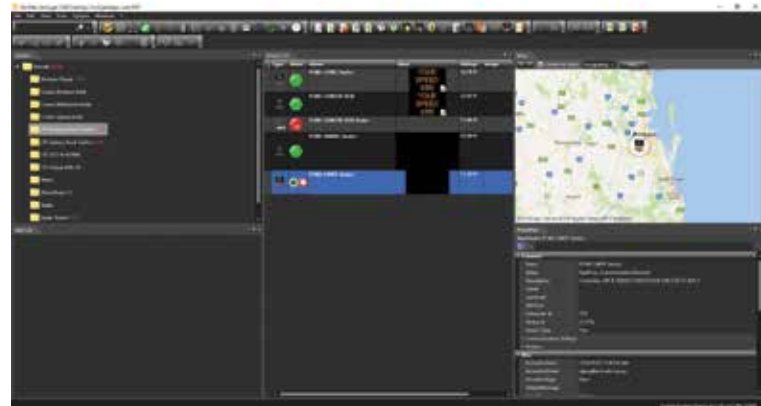
**SUITABLE FOR APPROACHING
VEHICLE SPEEDS UP TO 60 KM/H**

State of the art full-matrix trailer-mounted portable variable message signs. Features the Opti Power lens, tilt and rotate solar panels, Jamlogic fleet management software (modem required) and Stealth Technology (except the colour version). These units combine energy-efficient design and high-quality construction to provide the most reliable and cost-effective message signs on the market. Built with a compact design which makes it perfect for use on highway construction projects where space is limited as well as urban areas.

JAMLOGIC FLEET MANAGEMENT SOFTWARE

Our high speed modem with GPS allows you to maximise your productivity, efficiency and profitability, all remotely from your office or home. The JamLogic software is FREE and you get all the updates at no extra cost.

- Monitor, maintain and manage your signs from any PC, laptop, tablet or smartphone
- View your equipment in a list and GPS map view
- Change a message on one or more signs simultaneously with a simple click
- View your messages and battery voltages
- Group your signs in folders (by customer, location, project... the choice is yours)
- Receive e-mail or text alerts (low battery, cellular failure etc)



PCMS-320RC



PCMS-320RTRC



**SUITABLE FOR APPROACHING VEHICLE
SPEEDS GREATER THAN 90 KM/H**

**SUITABLE FOR APPROACHING VEHICLE
SPEEDS GREATER THAN 90 KM/H**



Mobile Variable Message Signs

ENERGY EFFICIENT DESIGN

- **TILT-AND-ROTATE SOLAR PANELS** - Panels tilt to a 45-degree angle to provide maximum solar recharging all year round
- Designed to run 12 months in most regions without manual charging
- Various configurations of solar panels and batteries are available to meet your needs

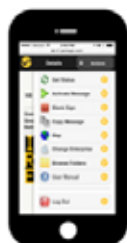
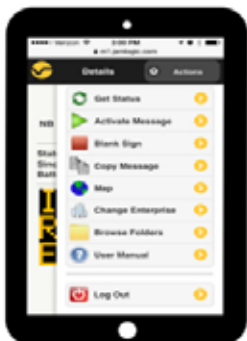
HIGH QUALITY CONSTRUCTION

- **Powder coated superior finish** - Impact, humidity, salt spray and rust resistant
- **4 levelling jacks** - For stabilisation and easy transportation
- **Electro-hydraulic lift mechanism** - For quick and effortless deployment
- **Heavy-duty molded fenders** - For durability and easy replacement
- **Plastic battery boxes** - To minimise battery corrosion
- ***Lockable control box** - For security (*VT models only)
- **50mm tow ball housing** - For easy towing

MARKETS

- Highway maintenance / construction
- City and regional councils
- Department of Transport
- Special events (concerts, sporting, festivals)
- Law enforcement
- Traffic management
- Work zones

JAMLOGIC WEB APPLICATION FOR SMART DEVICES



State of the art technology replacing the need for an on-board controller. Change your message, set parameters, check battery status and so much more from any smart device. There are two options for connectivity:

- Direct Wifi connection within range of the sign
- Logging in to the web based internet application

Contains all of the menu options you can see via your pc or laptop. Couldn't be easier!



DIMENSIONS AND WEIGHT

	PCMS-4880RC	PCMS-548VT	PCMS-320RC	PCMS-320RTRC
Overall Length	1899mm	3565mm	3747mm	3829mm
Overall Width	1487mm	1791mm	2096mm	2096mm
Travelling Height	2356mm	2417mm	2754mm	2845mm
Operating Height	4076mm	4081mm	4584mm	4705mm
Axle / Suspension	909kg	907kg	1588kg	1588kg
Weight (approx.)	628kg	580kg	939kg	1080kg

STEALTH TECHNOLOGY



Cleverly hidden battery compartment
- Deter thieves from stealing batteries
*Except RTRC models



Long lasting sealed batteries
- No maintenance required



- 1-year warranty on complete trailers
- 2-year warranty on Ver-mac manufactured electronics

Light Towers

PPL-1000



UP TO 14K LUMENS

PTL-1000



UP TO 14K LUMENS

The PPL-1000 and PTL-1000 are compact, battery powered portable presence and target lights. Presence lighting allows the motoring public to visually see from a distance an upcoming night time lane closure. The system is quick and easy to set up and does not require a diesel generator to power. They feature ultra bright LED lamps with Ver-Mac's exclusive Nightbrite Technology, providing a brighter and more environmentally friendly lighting system. Equipped with high performance lithium batteries and fast-charging system, these quality units will perform night after night. The presence of lighting reduces motorist's speed, approaching and through the work zone, increasing safety for motorist's and workers alike.

PSLT-4000S



UP TO 42K LUMENS

PSLT-6000



UP TO 63K LUMENS

The PSLT-4000S and PSLT-6000 are compact and powerful portable solar light towers that are cost effective and have a great return on investment. They are as visually bright, effective and compact as conventional diesel light towers, without costing thousands of dollars every year in fuel and labour. They feature ultra bright LED lamps with Ver-Mac's exclusive Nightbrite Technology, providing a brighter and more environmentally friendly lighting system. These quality units are ideal for lighting construction work zones, parking lots, special events, emergency response plus oil and mining applications.



- ✓ • NO NOISE
- ✓ • NO SMELL
- ✓ • NO FUEL EMISSIONS

Light Towers

1000 Series Features/Benefits

- **Nightbrite Technology** - Innovative exclusive LED fixture design provides increased brightness using less power consumption
- **Clear and Bright LED Lamp** - Long lasting and durable LED lamp provides targeted lighting with minimal light pollution and reduced glare
- **Compact Design** - Tripod legs quickly fold for easy set up and storage. Telescoping mast quickly raises to several heights up to 4300mm and stores neatly in storage box. Easily roll or carry the PTL-1000 to the desired project location and turn it on
- **High Performance Batteries** - Maintenance free high-powered LiFePO4 lithium batteries provide long lasting power with a high life cycle. They are non-toxic, non-contaminating and contain no rare earth metals, making them environmentally friendly
- **Charging System** - Intelligent LiFePO4 600watt fast charging system charges the batteries in less than 3 hours. Simply plug into an outlet or generator and the LED indicator light will notify you when it is charged
- **Adjustable Light Settings** - Adjust the brightness of the light to meet your application needs. A fully charged system can run from 10-30 hours depending on the brightness setting
- **Photocell** - Detects light and automatically shuts off the unit
- **Lockable Mast** - Secure your unit by adding a padlock
- **Eliminate Generator** - Reduce labour to the set up by 50% and eliminate fuel and maintenance costs. No fuel emissions and engine noise to harm the environment



Trailer Series Features/Benefits

- **Nightbrite Technology** - Innovative exclusive LED fixture design provides 40% increased brightness using the same power consumption, compared to other solar light tower systems
- **Clear and Bright LED Lamp** - Long lasting and durable LED lamps provide targeted lighting with minimal light pollution and reduced glare
- **Compact Design** - The innovative solar panel and trailer design make the PSLT-4000S easy to transport and set up without taking up valuable space
- **Intelligent Controller** - Schedule and control the brightness and length of your lighting event. Ver-Mac's easy to use selector switch provides multiple brightness and timing settings
- **Power Platform** - Robust power platform combined with energy-efficient Nightbrite Technology makes it autonomous for weeks in most applications
- **Low Cost Of Ownership** - Save thousands of dollars per year by eliminating fuel, fuel labour, engine maintenance and sodium light replacement
- **Multi-Orientation Solar Panels** - Solar panel tilts to various positions to maximise the performance without having to move the trailer around
- **Environmentally Friendly** - No fuel emissions and engine noise to harm the environment



DIMENSIONS AND WEIGHT

	PPL-1000	PTL-1000	PSLT-4000S	PSLT-6000
Operating Height	5107mm	4424mm	6096mm	7983mm
Operating Presence	2344mm	2021mm	N/A	N/A
Travelling Length	543mm	543mm	3789mm	3789mm
Travelling Width	548mm	548mm	1791mm	2075mm
Travelling Height	1905mm	1857mm	2559mm	2750mm
Weight (approx.)	53kg	41kg	710kg	1225kg
Axle/Suspension	N/A	N/A	907kg	1588kg

APPLICATIONS

- Construction
- Mining, Oil and Gas
- Outdoor Special Events
- Temporary Parking Facilities
- Emergency Response Services
- Utility Companies
- Work Zones



- 1-year warranty on complete trolleys
- 2-year warranty on Ver-mac manufactured electronics

Flashing Arrow Boards

**The most economic arrow board there is!
Run for days without turning vehicle on!**



VEHICLE MOUNTED ARROWBOARDS

Introducing the most reliable and durable arrowboard in the market. Our vehicle power plug wireless V-Touch controller reduces installation time and costs. The V-Touch AB controller combined with the Auto Up/Down feature make programming safe, quick and easy.

V-TOUCH AB CONTROLLER

Our vehicle-mounted arrowboard is controlled with the compact 95mm wireless V-Touch AB controller. It's the industry's most functional and easy to use controller!

- Wireless - reduces installation, maintenance and repair costs
- Intuitive - point-n-go icons allow quick selection of arrow patterns/mode
- Back-lit screen - perfect for night time use
- Real-time battery voltage level - an intelligent audible alert will advise low battery level prior to turning off
- Additional functions - lamp diagnostic, settings, and much more
- Integration of other equipment (optional)
- Wired version of the controller (optional)



POWER TILT MOUNT WITH AUTO UP/DOWN FEATURE

The Auto Up/Down feature ensures that the arrowboard is in the display position when in use and in the travel position when the unit is off, preventing damage and reducing wind drag.

- Select arrow pattern and arrowboard automatically raises to display position
- Select "OFF" and arrowboard automatically lowers to travel position
- Actuator's integrated limit switch prevents motor gear wear and tear
- Automatically detects the upright position. There is a clear indicator on the display showing if the arrowboard is in the up or down position

OPTI POWER LENS

Our 15 light arrow board features the Opti Power lens. Our molded lamps are made of 32 LEDs encapsulated in our Opti-Power lens. They are designed to maximise each LED's output and utilise up to 35% less energy. As a result this arrow board is the most power efficient unit on the market. Run at full capacity for days without using hardly any battery power.



Power Tilt Lifting Frame Also Available



- 1-year warranty on complete trolleys
- 2-year warranty on Ver-mac manufactured electronics

Trailer Version Arrowboard Also Available

Portaboom®



PORTABOOM® provides a physical barrier, protecting work zones and ensuring motorists STOP!

PORTABOOM® is a patented, portable boom gate specifically designed for all temporary traffic and access control scenarios. Remote control operated, PORTABOOM® allows Traffic Controllers to stand in a safe zone, removing them from the direct line of traffic.

FEATURES OF PORTABOOM®

- Easy to operate - PORTABOOM® is operated by a single button, remote control eliminating any confusion and minimising traffic controller error
- Stable yet portable - Weighing 95kg with four solid wheels and brakes for added safety, it's heavy enough for stability to withstand adverse weather and wind speeds of up to 82.8km/h yet light weight enough to easily manoeuvre
- Easy set up, no tools required - The boom gate and stability legs attach and detach with ease
- Fast assembly - It takes only minutes to set up
- Longevity of battery life - The rechargeable batteries provide up to 6,500 movements, up and down



BENEFITS OF PORTABOOM®

- PORTABOOM® is used in a wide number of applications including; temporary traffic control, road closures, lane closures, access control to worksites, event management, pedestrian management and temporary car park functions
- Eliminates the risk of Traffic Controllers standing in the direct line of traffic
- Reduces fatigue and the risks of heat exhaustion, dehydration and sunburn as the Traffic Controller can operate PORTABOOM® from a shaded safe zone
- Allows greater onsite mobility and efficiencies as one Traffic Controller can operate up to four PORTABOOM® units at a given time
- The wireless remote control operation of PORTABOOM® allows Traffic Controllers to perform regular site tasks, like assisting pedestrians and sign checks
- Significantly reduces the risks of motorists ignoring Traffic Controllers or temporary traffic light signals



PORTABOOM® is TIPS certified by the Australian Roads Research Board (ARRB) for use on all Australian roads



WORK ZONE MANAGEMENT CAMERA SYSTEM

THE ULTIMATE TOOL FOR QUALITY ASSURANCE

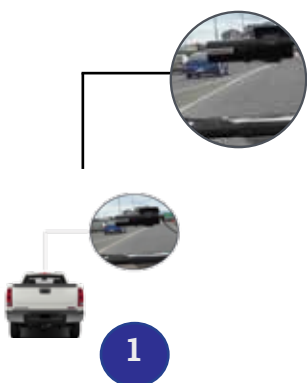
The WZMC-1000 is a fully-automated cloud-based work zone management camera system that allows contractors and agencies to document their projects. This easy to use, low-cost system provides the users with high-quality videos, automatic video transfer, cloud-based storage and easy download of videos. The WZMC-1000 system provides documentation that projects are set up correctly, device counts are accurate and a history of completed activities with accurate recording of dates and time.



APPLICATIONS

- Protect against future litigation
- Ensure accurate daily/weekly/monthly counts of deployed equipment
- Documentation of completed work activities
- Management tool to review and improve quality control
- Asset Management tool to document quality and condition of a variety of assets

HOW DOES IT WORK?



Videos are recorded via the Dashcam mounted to the vehicles windshield.



When the vehicle returns to the office, the Base Station locates the Dashcam and automatically downloads the videos and sends them to the cloud.



The videos are stored in the Ver-Mac cloud and can be easily accessed from your pc.



View the videos utilising Ver-Mac's Interactive Video Playback Software which provides HD quality videos with a dual interactive GPS Google map.

WZMC-1000 SYSTEM COMPONENTS

1 DASHCAM FEATURES

- High-definition camera with integrated Wifi and GPS mounted to windshield
- Camera wired to vehicle battery installs in less than 15 minutes
- Proximity sensor with voice feedback makes start/stop recording effortless
- Rugged case with locked cable prevents camera from being disconnected
- Battery protection circuitry allows the camera battery to be fully charged for video transfer
- Vehicle power plug option available



2 BASE STATION FEATURES

- Automatically downloads videos when dashcam comes into Wifi range
- One Ver-Mac Base Station Wifi server is installed in the office
- One or several cameras utilise one server
- No smartphone or cellular communication fees
- No need to retrieve, organise or send videos



3 WORK ZONE CAMERA MANAGEMENT SOFTWARE FEATURES

- Locate and view videos quickly using date/time or via the map
- Name videos by project for enhanced video management
- Download HD videos from your pc
- Videos can be stored and retrieved for up to 3 years



4 INTERACTIVE VIDEO PLAYBACK FEATURES

- Dual screen of HD quality video with interactive GPS Google map
- Each video has date/time and longitude/latitude coordinates
- Record videos day or night
- View or download all of the video or just portions



Speed Indication Device Trailers

EVOLIS

EUROPEAN DESIGNED AND MANUFACTURED

With more than 8000 units installed world-wide, the Evolis Speed Indication Device is the product of choice for an all in one radar and data collection device. Not only does it present a sleek European design, it has also been built using the best components giving it a reputation for being one of the most energy efficient and reliable units in the market.

The Evolis Speed Indication Device is easily configured and installed to educate motorists of their travel speeds. It helps to reduce overall excess traffic speeds, particularly in high incident areas. Utilising the optional built in data logger, road asset owners can gather and analyse traffic speed data on specific roads so that they can make informed planning decisions on road safety.

75 watt solar panel with bird prevention edge

340mm high speed digits (red/amber/green)

YOUR SPEED
20
THANK YOU

Large amber text template & ultra-high brightness LEDs

Heavy duty corner jack stands (15inch, 1360kgs)



Optional Extras

- Bluetooth Connection
- 3G Connection
- One way Traffic Flow Statistics
- Two way Traffic Flow Statistics

Radar Sensor

Doppler Radar:	24.125 Ghz
Detection range:	10-250 metres
Detection angle:	17 °
Accuracy:	+/- 1km/h (travelling at 100km/h)

Display

LED:	3 digits
Colors:	Red, Amber and Green
Size of digits:	340mm
Text display (Matrix):	640mm x 160mm (64 x 16 pixels) 1 line of 7 characters 160mm high 2 lines of 10 characters 70mm high
Visibility:	250m
Refresh:	1.2 seconds (configurable)

Housing

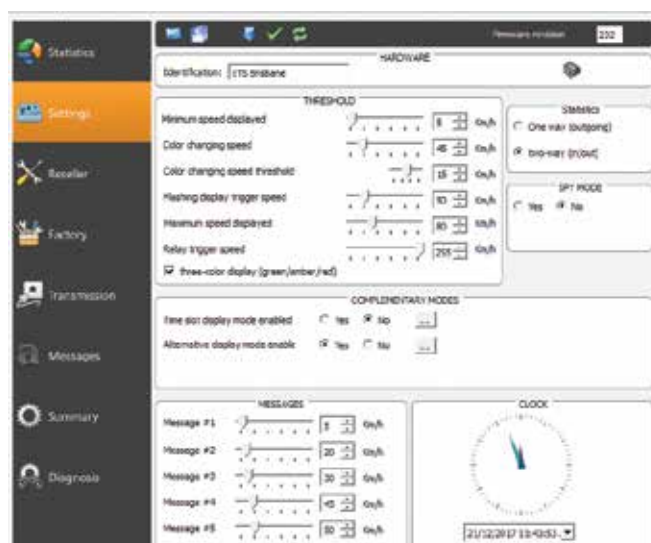
Dimensions:	H: 700mm x W: 709mm x D: 170mm
Housing:	Injected ABS resin, grey RAL 7035
Front face:	Polycarbonate
Waterproof:	IP66
Weight:	8kg (without batteries)

EVOCOM SOFTWARE

Advanced Configuration & Statistic Analysis

Evocom PC software, provided free of charge, is featured with a user-friendly interface for advanced configuration: specific speed ranges, speed increments, data recording function (*), text messages, time slots etc...

(*)Data recording function (one way / two way traffic flow statistics) purchased separately.

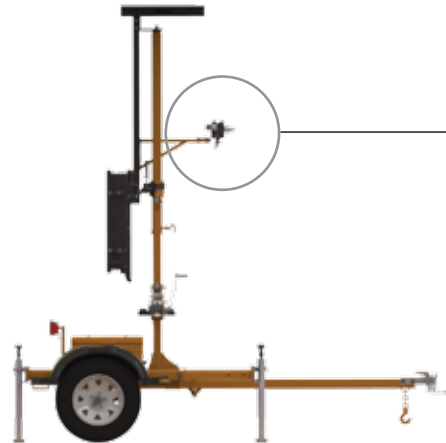


Settings configuration screen

Speed Indication Device Trailers

SPEEDCAM

The SP-3248V system is designed to automatically capture a picture of a speeding vehicle, along with the speed and license plate number. Combined with the speed awareness trailer and SpeedLog software, the SP-3248V is a cost effective alternative to other automated license plate recognition systems. The SP-3248V is the ideal speed enforcement tool for mining, oil, utility and many other private applications that have recurring speeding problems.



STEALTH TECHNOLOGY



Cleverly hidden battery compartment - Deter thieves from stealing batteries



Long lasting sealed batteries - No maintenance required

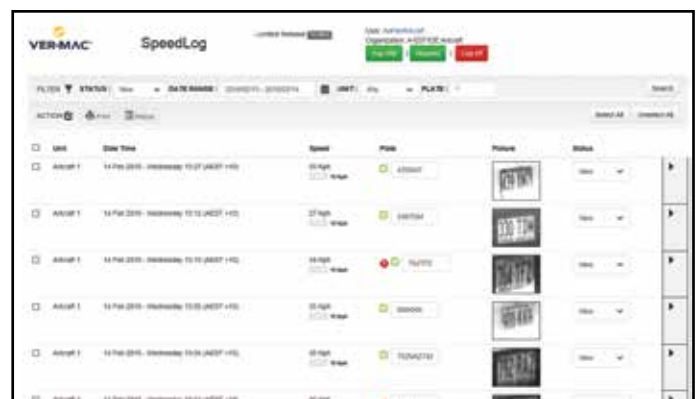
OPTIONS (Other options available)

- Battery charger
- Data logger
- Modem with GPS
- Data plan (requires modem)

- 1-year warranty on complete units
- 2-year warranty on Ver-mac manufactured electronics

FEATURES & BENEFITS

- **High-End Traffic Calming Device** - Get all the benefits of our standard speed feedback signs, plus the camera and software to capture and manage recurring speeding vehicles
- **Speedlog Software** - Simple to use web interface that allows you to capture pictures, license plates and speeds
- **Point and go Setup** - With automatic discovery and native in-browser streaming, setting up a traffic enforcement camera has never been simpler. Simply point at the road and use the visual cues from your smart device to confirm correct aiming
- **Two Lane Coverage** - When mounted at the side of a roadway, a single trailer can record vehicles from two adjacent lanes, and can track vehicles at speeds ranging between 10 - 160km/h in both directions
- **Self Contained** - SP-3248V units include two camera sensors, an infrared illuminator and a dual-core processor. The exclusive on-board algorithms track vehicle license plates to accurately compute vehicle speeds and to count traffic flow



SPEEDLOG SOFTWARE

- Automatically logs vehicles that exceeded the speed limit
- View the unit, date/time, logged speed, speed limit, plate number, plate picture and status at a glance
- Review infrared or colour picture for the plates and vehicles
- Ability to manually modify the plate number, status etc.
- Auto GPS location of each deployed unit
- Generate reports (e.g. over speed vehicles per hour per day)

DIMENSIONS AND WEIGHT

- Overall length: 3200mm
- Overall width: 1600mm
- Travelling height: 2480mm
- Operating height: 3380mm
- Weight (approx.): 580kg

DISPLAY

- Speed display panel: 810mm x 889mm
- Full matrix display: 32 x 48 pixels
- High definition display cards
- 1 LED per pixel
- Automatic brightness adjustment

ADD A STATIC SIGN TO THE TRAILER



Vehicle Activated Signs (VAS)

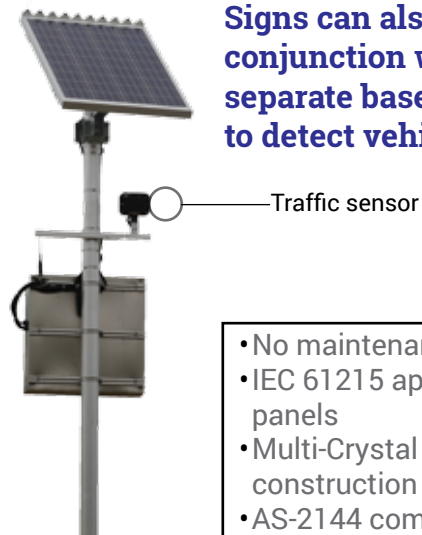
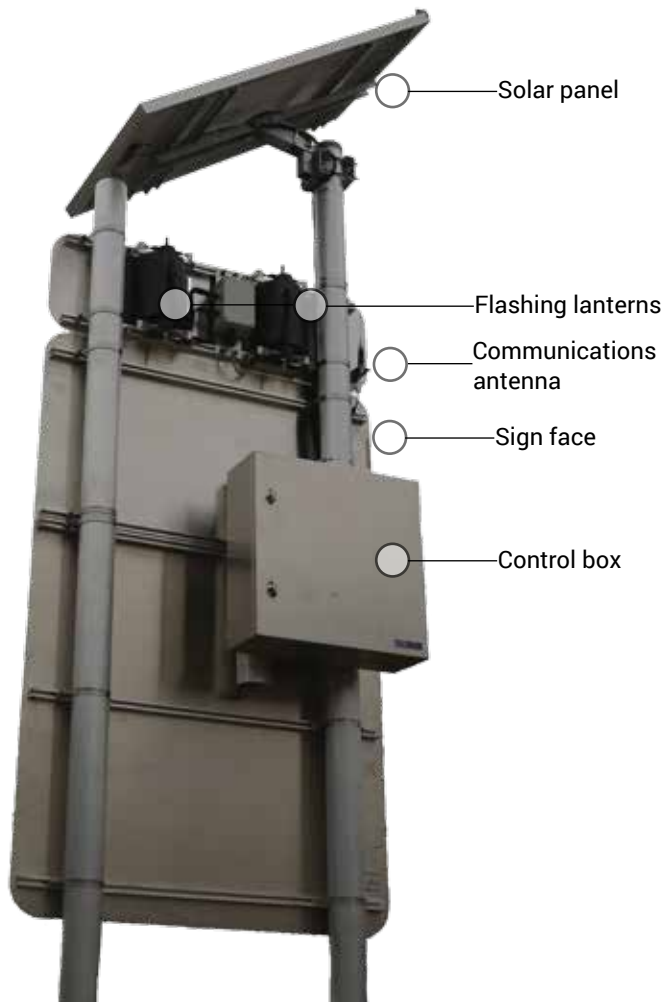
Vehicle Activated Signs offer solutions that provide direct feedback to drivers to give advanced warning of an approaching crossing, curve, intersection or to notify the driver they are exceeding the speed limit within certain areas. These signs can be full LED matrix panels or a combination of a static sign with LED modules. We work with you to design the sign to your requirements and ensure it operates at maximum efficiency and reliability. We come to site to commission the sign and as always offer full technical support following installation.



VAS TO SUIT YOUR APPLICATION NEEDS



EXAMPLE PRODUCT CONFIGURATION



Signs can also work in conjunction with a separate base station to detect vehicles

- No maintenance Gel batteries
- IEC 61215 approved solar panels
- Multi-Crystal cell solar panel construction
- AS-2144 compliant Amber LED beacons
- Manual or remote activation
- Stainless steel enclosure
- Australian compliant road signs

SIGN TRIGGERING

- Calendar: Set to time / date schedules
- Clock: Set to time schedules
- Radar: Set to vehicle detection
- Constant: 24hrs / day
- Speed: Set to speeding vehicles

TC1790 SIGN VARIATIONS



European Designed & Manufactured

With more than 8000 units installed world-wide, the Evolis Speed Indication Device is the product of choice for an all in one radar and data collection device. Not only does it present a sleek European design, it has also been built using the best components giving it a reputation for being one of the most energy efficient and reliable units in the market.

The Evolis Speed Indication Device is easily configured and installed to educate motorists of their travel speeds. It helps to reduce overall excess traffic speeds, particularly in high incident areas. Utilising the optional built in data logger, road asset owners can gather and analyse traffic speed data on specific roads so that they can make informed planning decisions on road safety.



FEATURES & BENEFITS

- Anti-corrosion, anti-UV treatment plus unit sealing ensures long term resistance, strength and durability
- Injected ABS resin waterproof housing with integrated hooks
- Lockable permanent mounting bar made of injected ABS resin, mounted on poles with brackets (sold separately)
- Front face made of tough polycarbonate, fixed to the casing with mechanical clip and gasket seal
- Waterproof IP66 housing for 2 batteries, USB port, dial selector and adaptor
- Installed in minutes by one person
- Optional 1 or 2 way traffic flow statistics
- Optional pre-configured speed/text display settings prior to installation
- Accompanying EVOCOM software for settings configuration plus data analysis
- 34cm high speed digits (red/amber/green), a large amber text template and ultra-high brightness LEDs



Optional Extras

- Bluetooth Connection
- 3G Connection
- One way Traffic Flow Statistics
- Two way Traffic Flow Statistics

Radar Sensor

Doppler Radar:	24.125 Ghz
Detection range:	10-250 metres
Detection angle:	17 °
Accuracy:	+/- 1km/h (travelling at 100km/h)

Display

LED:	3 digits
Colors:	Red, Amber and Green
Size of digits:	340mm
Text display (Matrix):	640mm x 160mm (64 x 16 pixels) 1 line of 7 characters 160mm high 2 lines of 10 characters 70mm high
Visibility:	250m
Refresh:	1.2 seconds (configurable)

Housing

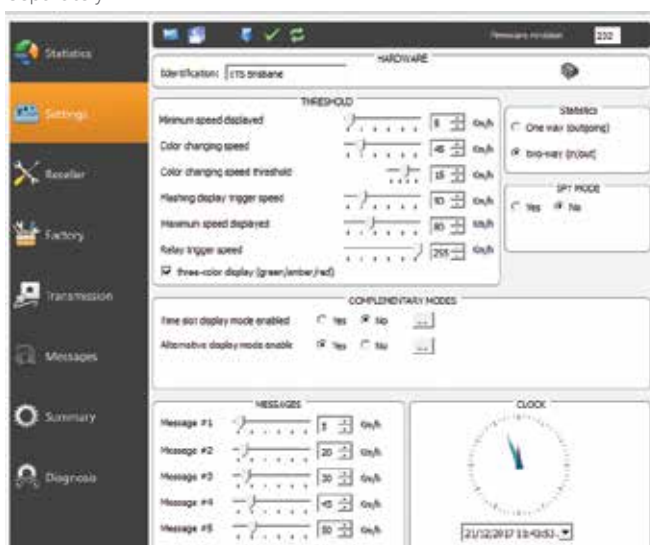
Dimensions:	H: 700mm x W: 709mm x D: 170mm
Housing:	Injected ABS resin, grey RAL 7035
Front face:	Polycarbonate
Waterproof:	IP66
Weight:	8kg (without batteries)

EVOCOM SOFTWARE

Advanced Configuration & Statistic Analysis

Evocom PC software, provided free of charge, is featured with a user-friendly interface for advanced configuration: specific speed ranges, speed increments, data recording function (*), text messages, time slots etc...

(*)Data recording function (one way / two way traffic flow statistics) purchased separately.



Settings configuration screen

NIGHTBRITE LED EDGE-LIT SIGNS



ENHANCE SIGNAGE PROMINENCE & IMPORTANCE









The i:TS range of **NightBrite** LED Edge Lit signs are a thin, light weight, low power and low maintenance replacement for traditional light boxes. **NightBrite** sign panels provide an evenly lit and highly visible sign face suitable for night time enhancement of important road signs at intersections, for general regulatory signage and posted road speed limit signs to name a few applications.

FEATURES & BENEFITS

- **Multiple Applications** - In addition to road sign applications our range of panel sizes are also suitable for commercial and other custom sign applications
- **Durable** - The **NightBrite** sign range use high quality LED's with a lifespan in excess of 100,000 hours of use
- **Versatile** - The signs can be mains or solar powered along with being activated by a variety of options such as streetlight power at night, ambient light sensor to activate when it gets dark or wirelessly via Bluetooth, WiFi or over a 3G cellular network
- **Compliant** - The **NightBrite** sign is manufactured using class 1X retro-reflective sheeting like any other road sign so if not illuminated are still standard compliant retro-reflective road signs. This ensures the road signs have a high standard of visibility day or night and in low light conditions
- **Easy Installation** - Our range of **NightBrite** signs come complete with standard sign support rails on the back and can be easily installed with industry standard sign brackets



SIGN EXAMPLES

Sign	Code	Description	Sizes	Sign	Code	Description	Sizes
	R2-4	No Entry	450mm 600mm 750mm		R4-1	Speed Restriction	450mm 600mm 750mm
	R1-1	Stop	600mm 750mm		W3-1	Stop Sign Ahead	450mm 600mm 750mm
	R1-2	Give Way	750mm 900mm		W5-20	Slippery	600mm 750mm
	R1-3	Roundabout	750mm 900mm			Gantry Signs Tunnel Signs (made from 750mm high planks)	

LED Edge-Lit Signage - With Solar Kit

Overview

This system contains 3 modules:

- 1 **Solar Panel**
- 2 **Solar Kit Enclosure**
 - 400 x 300 x 200mm Aluminium Enclosure
 - IP65 Rated
 - Contains Solar Regulator & Batteries
- 3 **Edge-Lit Sign Face & Control Enclosure**
 - IP65 Rated
 - Includes Ambient Light Sensor & RTC for Light and Timed Operations



- | | |
|-----------------------|--------------------------|
| 1 Solar Kit Enclosure | 4 Sign Power Output |
| 2 Door Lock | 5 Sign Control Enclosure |
| 3 Solar Power Input | 6 Embedded LED Strip |

SECURITY and SURVEILLANCE



DETECT



DETER



ALERT

PSD-4000 PORTABLE SURVEILLANCE & DETERRENCE SYSTEM

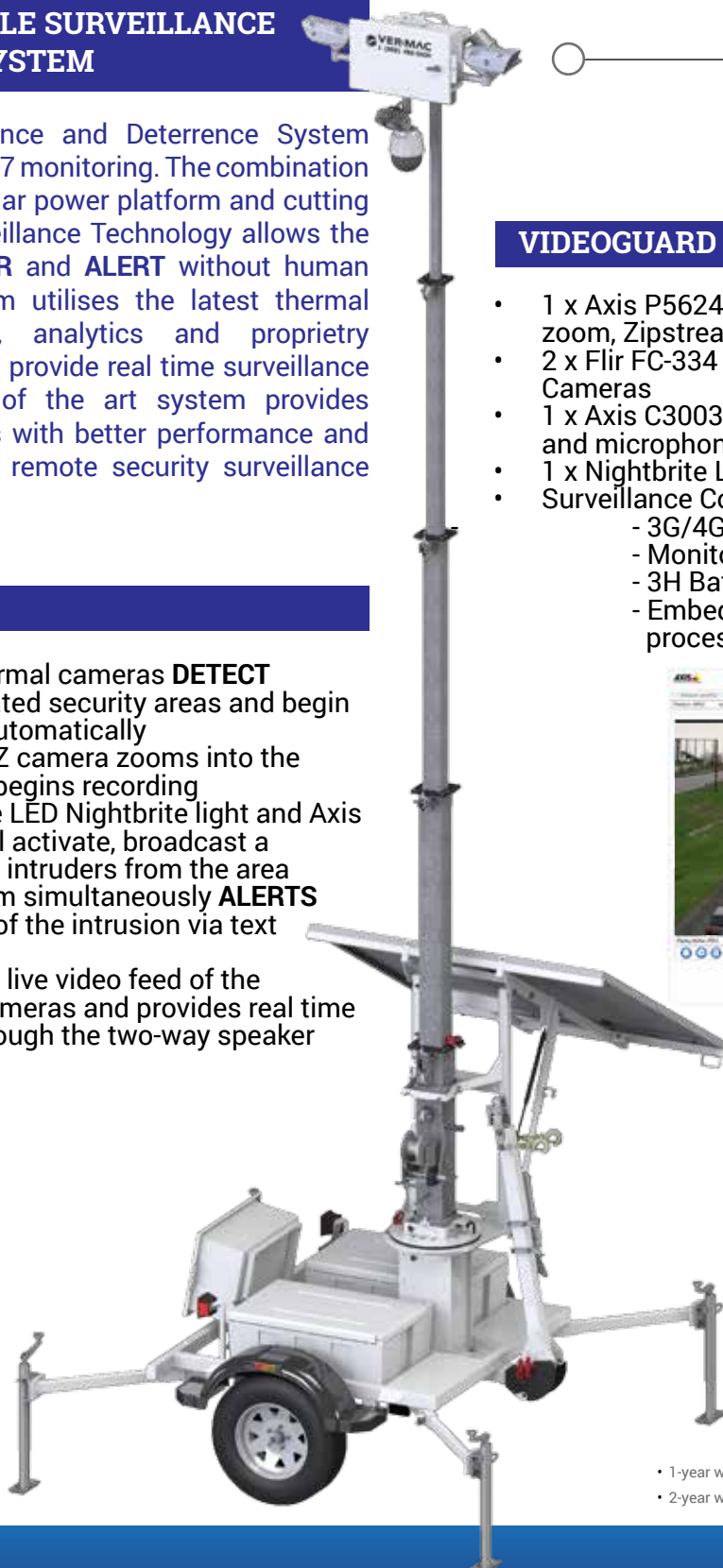
The Portable Surveillance and Deterrence System provides off the grid, 24/7 monitoring. The combination of a robust battery / solar power platform and cutting edge VideoGuard Surveillance Technology allows the user to **DETECT**, **DETER** and **ALERT** without human interaction. The system utilises the latest thermal imaging technologies, analytics and proprietary VideoGuard software to provide real time surveillance solutions. This state of the art system provides enormous cost savings with better performance and results over traditional remote security surveillance solutions.

HOW IT WORKS

- Two Flir FC-334 thermal cameras **DETECT** intruders in designated security areas and begin recording images automatically
- An Axis P5624E PTZ camera zooms into the intrusion zone and begins recording
- Instantaneously the LED Nightbrite light and Axis C3003E speaker will activate, broadcast a warning and **DETER** intruders from the area
- The software system simultaneously **ALERTS** security managers of the intrusion via text or email
- The alert provides a live video feed of the thermal and PTZ cameras and provides real time communication through the two-way speaker

VIDEOGUARD TECHNOLOGY

- 1 x Axis P5624-E, HD 720p, 23 x Optical zoom, Zipstream
- 2 x Flir FC-334 (34x28deg) Thermal Cameras
- 1 x Axis C3003E high volume speaker and microphone
- 1 x Nightbrite LED light (6000 lumens)
- Surveillance Control Cabinet:
 - 3G/4G/LTE Modem with GPS
 - Monitoring electronics
 - 3H Battery backup
 - Embedded video analytics processor



- 1-year warranty on complete units
- 2-year warranty on Ver-mac manufactured electronics



APPLICATIONS

- Construction job sites
- Remote sites
- Commercial building construction
- Retail asset protection
- Mining / Oil & Gas
- Airports
- Special events security

DIMENSIONS & WEIGHT

- Operating height: 7821mm
- Operating length: 2723mm
- Operating width: 2634mm
- Travelling length: 3244mm
- Travelling width: 2075mm
- Travelling height: 2741mm
- Weight (approx.): 943kg
- Axle/suspension: 1588kg

GENERAL SPECIFICATIONS

- 7925mm galvanised mast
- Solar array: 450 watts (60deg tilt / 360deg rotation)
- Batteries: 11280 watts wired in a 24 volts DC system
- Manual winch mechanism
- Foldable & lockable tongue
- 4 outriggers for stabilisation
- Secure battery boxes

REMOTE VIEWING & VIDEO RETRIEVAL

- Access videos in real time from anywhere: Web, iOS and Android applications
- Broadcasting to unlimited viewers with no video degradation
- Time lapse pictures taken from 5 different presets every 5 mins
- Retrieve still photos
- Retrieve recorded video

REAL TIME SYSTEM CONTROL & ANALYTICS

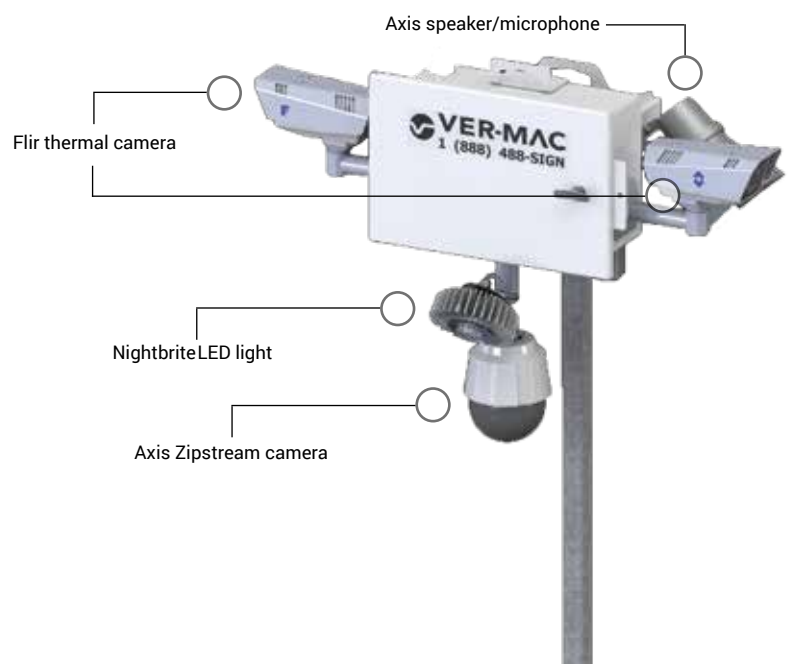
- Local intelligence controlling the various components as an homogeneous system
- Manage system health in real time
- Real time alerts
- Monitor system up/down time
- Battery voltage
- Current system power usage
- Display active GPS monitoring
- Important temperature data

COMMUNICATION

- Cellular
- Using the latest bandwidth encoders

RECORDING

- Cloud archiving technology allows for storage and playback without traditional DVR/NVR technologies



ENHANCED STATIC SIGNS

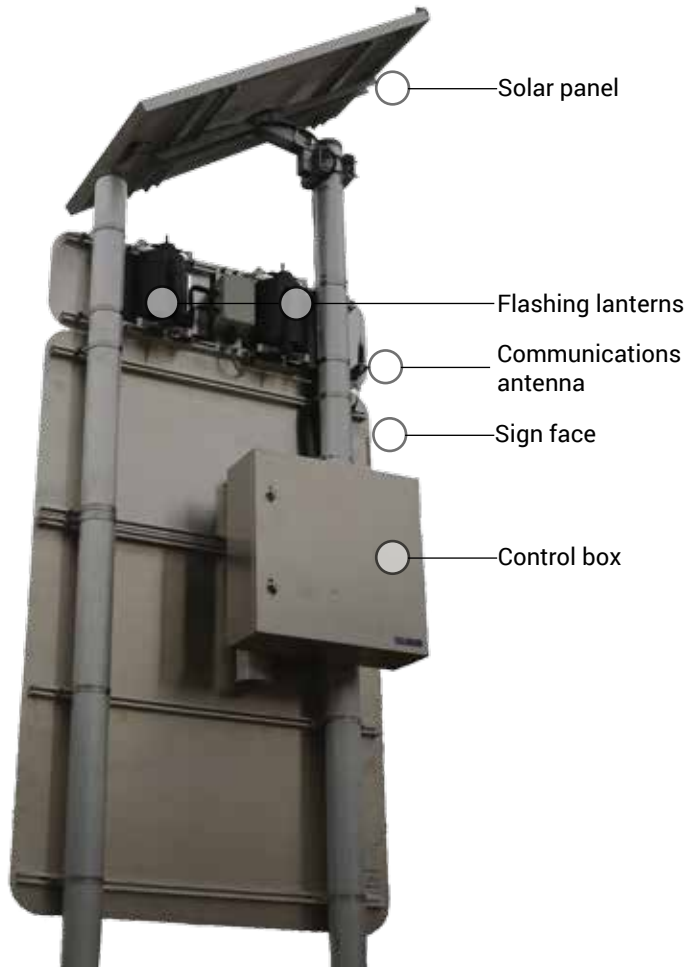
Enhanced Static Signs offer solutions that provide direct feedback to drivers to give advanced warning of an approaching crossing, curve, intersection or to notify the driver of road closures within certain areas. These signs consist of a combination of a static sign with LED modules. They have a proven track record of being more effective than a static sign alone. We work with you to design the sign to your requirements and ensure it operates at maximum efficiency and reliability and complies with relevant Australian standards. We come to site to commission the sign and as always offer full technical support following installation.



SIGNS TO SUIT YOUR APPLICATION NEEDS



EXAMPLE PRODUCT CONFIGURATION



APPLICATIONS

- Flooding
- Cane Railway
- Slippery Roads
- Trucks (crossing or turning)
- Falling Rocks
- Stock Crossing
- Changed Roadwork Conditions
- School, Pedestrian or Roadwork Zones
- Road Closures or Detours
- Traffic Control
- General Hazards

- No maintenance Gel batteries
- IEC 61215 approved solar panels
- Multi-Crystal cell solar panel construction
- AS-2144 compliant Amber LED beacons
- Manual or remote activation
- Stainless steel enclosure
- Australian compliant road signs



FIXED VMS

FLOOD ZONE SIGNS



TC2204_1



TC2206_3

EVOCITY PUBLIC INFORMATION DISPLAY

The EVOCITY Public Information Display (VMS) is an excellent solution to effectively, quickly and economically communicate information that requires regular updates. Different messages can be broadcasted on this VMS in loops via the internet (we recommend loops of 5-10 messages) to obtain a significant recurrence and increased perception by the public. The EVOCITY Public Information Display (VMS) is a so called “passing” media. It allows you to communicate with more people (passing places) and should contain enough synthetic messages to enable the reader to grasp the information without stopping.



MOUNTED BY ONE PERSON IN MINUTES



EVOCITY TECHNICAL DATA

Dimensions:	1100mm (w) x 920mm (h) x 150mm (d)
Display Area Dimensions:	960mm (w) x 640mm (h)
Display Resolution:	96 pixels (w) x 64 pixels (h) (6144 LEDs)
Pixel Pitch:	10mm
Text Display:	8 lines x 19 characters per line or a variety from 1 line to 8 lines or text mixed in with images
Image Display:	Up to the whole display area
Display Technology:	SMC LED
Display LED Colour:	Amber
Display Viewing Angle:	120 Degrees
Weight:	20kg - without batteries
Housing Material:	ABS
Display Face:	Polycarbonate
IP Rating:	IP65
Power Supply:	12V DC
Power Sources:	12V DC batteries 12V DC batteries c/w mains battery charger 240V to 12V DC mains power supply (no battery required)
Avg Power Consumption:	15W
Operating Time Battery Only:	1-2 days
Battery Recharge Time:	5 hours
Mounting:	Post bracket included (requiring 2 steel straps, sold separately) Steel mounting straps dependent on diameter of post being used
Communication Options:	Remote secured WEB/GPRS Locally by USB or Bluetooth
Software:	User friendly set-up EVOPLAY software
Warranty:	2 years

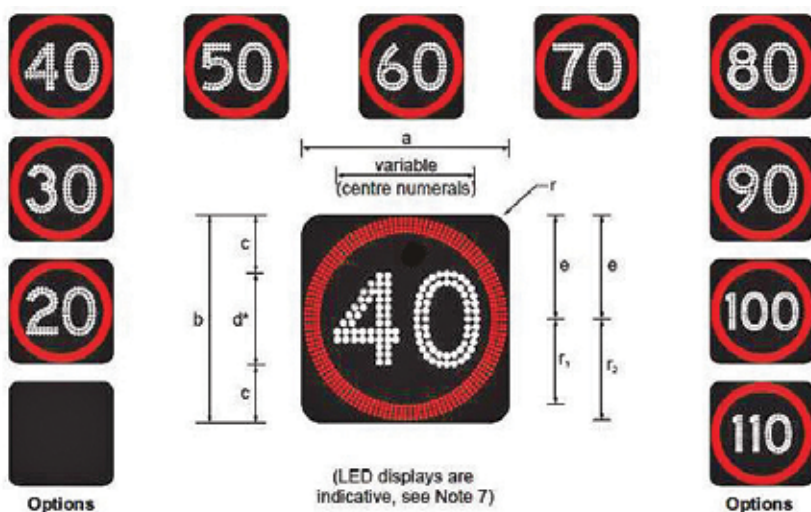
FIXED VMS

VARIABLE SPEED LIMIT SIGNS (VSLS)

Variable Speed Limit Signs (VSLS) may be used as part of an overall traffic management system to detect, monitor, manage and control traffic on the road network. This is achieved by altering the posted speed limit and/or lane control status throughout a defined zone. VSLS can also be used as a standalone device able to be controlled manually during commissioning, maintenance and or special operating activities. Our VSLS operate at maximum efficiency and reliability and comply with relevant Australian standards. We come to site to commission the sign and as always offer full technical support following installation.



VARIABLE SPEED LIMIT SIGNS (VSLS)



	a	b	c	d* (2 numerals)	d* (3 numerals)	e	f	f ₁	f ₂
A	450	450	125	200DN	-	225	45	185	220
B	600	600	180	240DN	240CN	300	60	235	295
C	900	900	250	400DN	320DN	450	90	365	445
D	1200	1200	360	480DN	480CN	600	120	480	590

VSLS signs allow for a central control authority to dynamically adjust the posted speeds of major roadways for the purpose of improving safety and managing the flow of traffic through either scheduled variations or manual override. The product operates by actioning one of many pre-programmed frames when directed by a user or scheduled by a plan.

VEHICLE DETECTION / SENSOR TECHNOLOGY

OVERHEIGHT DETECTION

Preventing high value assets such as bridges and tunnels from being struck by over height vehicles. The solution saves time, money and also many unseen downstream effects that impact business, insurance and the community in general as a result of the asset being struck. Installing a reliable vehicle over height detection system prior to a bridge or tunnel can instantly activate downstream warning devices that can alert the operator of the vehicle of the danger ahead therefore prompting them to take evasive action. In most cases it only takes the prevention of one significant impact to pay for an entire over height detection system making the return on investment extremely fast.



APPLICATIONS

- Detection of vehicles that are too high to pass under bridges or enter tunnels
- Detection of over height vehicles and corresponding lanes
- Detection of ships or boats that are too high to pass under bridges
- Vehicle travel direction detection
- Wrong Way traffic detection

SYSTEM COMPONENTS

- Infrared beam transmitters & receivers
- Electronic warning sign
- Uninterruptable power supplies
- Inductive traffic loop
- Optional video
- Optional traffic counter

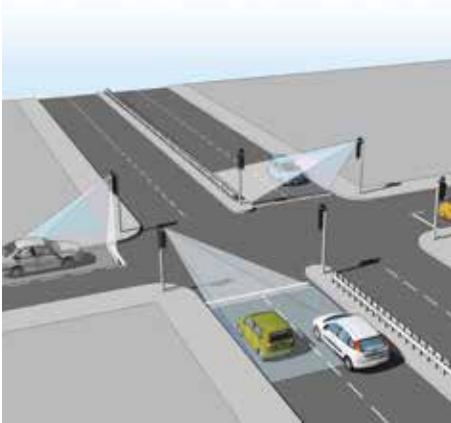


VEHICLE DETECTION / SENSOR TECHNOLOGY

INTELLIGENT SENSORS

Latest technology sensors used for a multitude of applications; pedestrian detection, traffic detection, stop line detection, pedestrian wait area detection, multi-lane roadway detection and more. Sensors can be used to measure vehicle speed, vehicle range, vehicle length, classification, movement and vehicle counts. They can be paired with smart signs to create smart work zones.

Intersection Control



Vehicle Activated Sign Driver



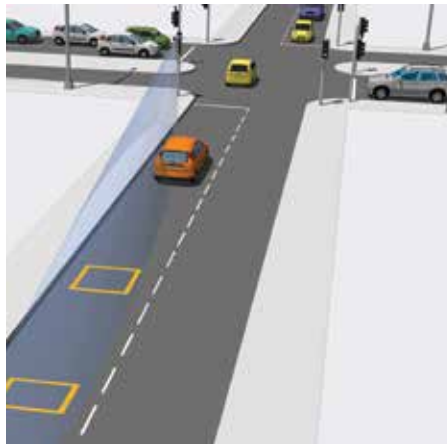
Temporary Applications



Low Power Applications



Vehicle Count



Single Lane Stop Line



Pedestrian Area Detectors



Multi-Lane Highway Detectors



RAIN SENSORS

FLOOD DETECTION AND WARNING SYSTEMS

Flash flooding is increasingly becoming a regular occurrence in Australia so it is becoming a vital requirement to incorporate sensor technology giving motorists advanced warning of potential flood zones. The solution is a combination of technologies, each of which can be used independently or combined to provide a comprehensive monitoring warning system for roads subject to flooding. Smart signs are automatically activated via local water level measurement triggers or rain sensors. SMS messages are sent to notify stakeholders of the road status.





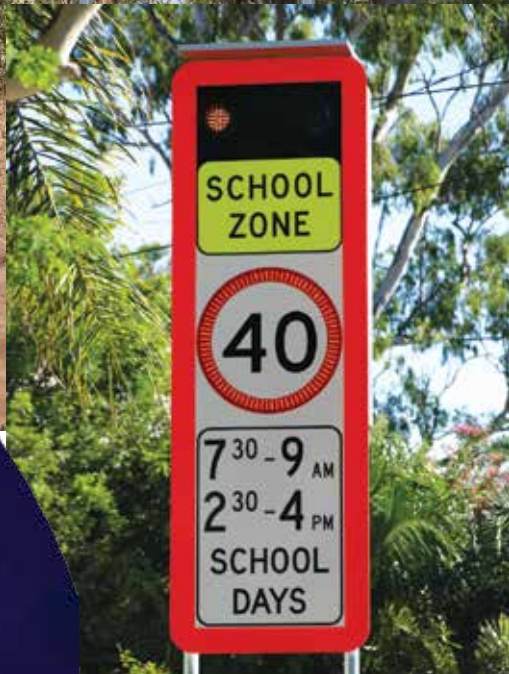
STATUS: New

SPEED: 108 Km/h

SPEED LIMIT: 100 Km/h

ACCURACY: 0.8

Time	Vehicle	Info
11:40:01	13.48	
11:40:02	13.24	
11:40:03	12.72	
11:40:04	12.72	
11:40:05	12.72	
11:40:06	12.72	
11:40:07	12.72	
11:40:08	12.72	
11:40:09	12.72	
11:40:10	12.72	
11:40:11	12.72	
11:40:12	12.72	
11:40:13	12.72	
11:40:14	12.72	
11:40:15	12.72	
11:40:16	12.72	
11:40:17	12.72	
11:40:18	12.72	
11:40:19	12.72	
11:40:20	12.72	



Brisbane
84 Bluestone Circuit,
Seventeen Mile Rocks QLD 4074
P: 1300 769 852
info@itsau.com.au

i:TS Intelligent
Traffic Systems

www.itsau.com.au