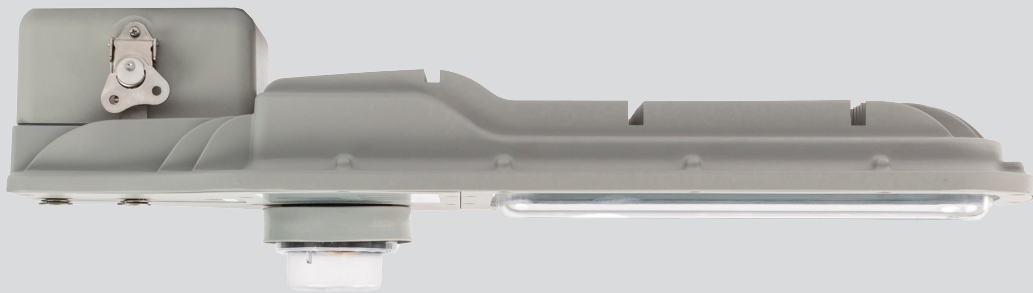


ALDRIDGE



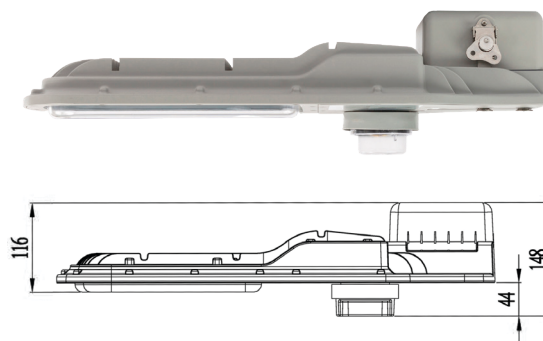
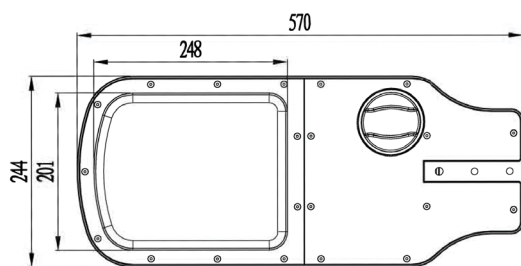
P-LED II - 30W



LED Lighting for Residential Roads



Dimensions



Features

- SmartCity Ready - TST compatibility Zigbee, LoRa, NBLoT
- High Performance Street Lighting luminaire designed to meet stringent Australian/New Zealand standards
- High Performance Optics designed to comply and meet Australian standards AS/NZS 1158.3.1:2020
- Direct replacement of 125W conventional P-category Mercury Vapour, Metal Halide, High Pressure Sodium and Fluorescent luminaires
- Integrated thermal management
- Segregated termination chamber c/w quick access latch
- Self cleaning housing and PMMA optical diffuser
- Diffuser: Aero screen (AE) Standard
- 20 year design life
- 10 year warranty

Options

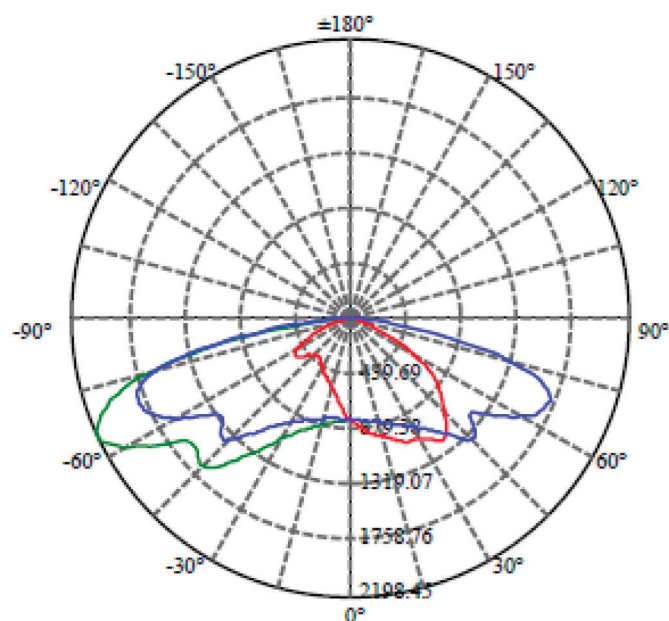
- Controller:** Zhaga Book 18
- DALI-2** D4i Driver
- Fuse Terminal Block/FTB**
- Surge Protection Device/SPD**20KVA
- Class II/Double Insulated (DB)**
- Colour:** Grey (GR Standard), Black (BL), White (WH),
- CCT:** 2700, 3000 and 5000K (4000K Standard)
- Visor:** Glareshield/anti-spill light kit (GV)
- Diffuser:** Semi cut-off (SC)



Technical Data

- Body:** High Pressure Marine Grade Die Cast Aluminum
- Optics:** P4 & P5 Distribution
- LED:** LUMILED
- System Watts:** 30W
- Finishing:** Powder Coat Grey (Grey Standard)
- Mounting:** 4 - 9 Metres
- Fixing:** Side Spigot Mount (27-35mm OD)
- IP rating:** IP65
- IK rating:** IK08
- Voltage:** 100V - 240V 50/60Hz
- Power Factor:** >0.9
- Controller:** 7 Pin NEMA receptacle (std)
- Surge Protection Device (SPD) :** 10KVa Standard

Photometric Design Data



Specification P-LED II 30W

PRODUCT CODE	PLED.II.30W
System Watts	30
Input Voltage	100V - 240V 50/60Hz
CCT (K)	4000
CRI	Ra>80
IP Protection	IP65
IK Protection	IK08
Weight (Kg)-max.	5.05kg